

Wonlex CT23 & CT24 4G Kids smartwatch.

Instructions for watch setup.

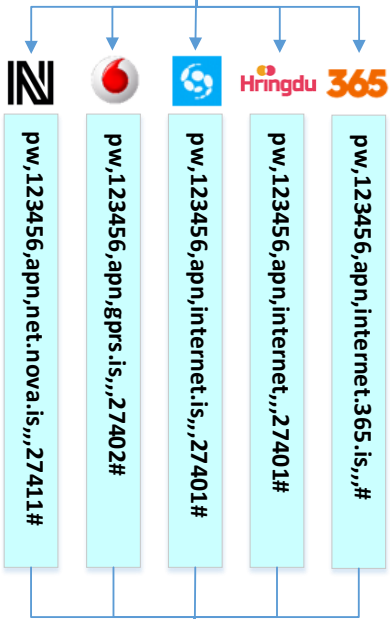
Insert the NANO SIM card into the card slot
(The processor faces up to the display)
 and then turn on the watch.
(Note: SIM card with data volume and credit)

Control station setting
 ie phone of the parent who will be the main contact of the watch.
 Note. The phone must have DATA ROAMING turned on.

Control station setting, main route
 Send an SMS from your phone to the watch phone number with the text:
pw,123456,center,PARENT PHONE NUMBER#
(Note: Use lowercase letters, commas and remember # at the end)
(Note. no confirmation will be returned.)

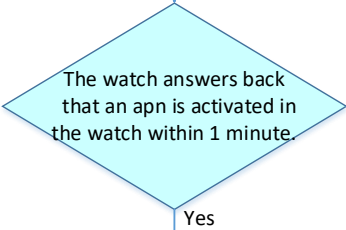
Network operator setting.
 Now you need to enter the settings of the watch network operator, send SMS from the mobile phone to the phone number of the watch. You only need to send one SMS.

Note. to choose the right network operator
 Nova
 Vodafone
 Síminn
 Hringdu
 365



Common solutions

- Note. to have „DATA ROAMING“ turned on in your phone.
- Note. whether the watch is switched on.
- Note. whether there is an active SIM card in the watch and try calling the watch. *(Note SIM card with data volume and credit)*
- Try using the password 523681 instead of 123456 Example:
pw,523681,center,8559999#
- Note. to use the correct password, if a password has been changed then use the new personal password instead of 123456.
- You need to adjust the number of commas, periods and spaces in the configuration items, the keyboards on mobile phones often correct the text sequences incorrectly and automatically create spaces after the period and comma.
- Note. need your carrier to have the correct apn information.
- For more information, see "Questions and answers" on page 2.



Change the "pw" password.
 Note. It is necessary to change the password code in the watch in a personal password that the user chooses.
 pw can contain up to 5 lowercase letters and be a maximum of 9 characters long
 This is done by sending the message **pw,OLD_PASSWORD,pw,NEW_PASSWORD#** from the phone to the phone number of the watch. Example: pw,123456,pw,888999#
 - There we were changing the password on the watch from being 123456 to being 888999
(Note. no confirmation will be returned.)

Turn off and reset
 Turn off the watch by going to settings on the watch and into "shut down".
 Then turn it back on using the button on the watch.
 Then install a program e.g. Wonlex app for your phone, see guide. on p.2.

Instructions on installing smartphone App.

1. Make sure the watch has already been activated (Page. 1) Before proceeding!
2. Download and install „Wonlex“ app through Google Play / iOS App Store on parent or guardian phone.
3. Open app and select Register to create a new account
 - a. Watch id/License: Scan the QR code found on the outside of the watch container.
 - b. Account: Your email address
 - c. Nickname: Nickname for the watch user (Johny etc.)
 - d. Password: 6-12 character password to protect Wonlex account
 - e. R_Password: Confirm (repeat) the chosen password
 - f. Notice that the region setting is set to: „Europe and Africa“



Watch ID - QR code example.

4. When adding another watch to the app, navigate to „me“ (Avatar upper left corner) -> “ Device List“ -> „Add device“.
5. When adding another phone, install the app on another phone and log in using the same account as before.
6. Through settings, navigate to the „Phone book“ and insert contacts that the child will be able to call. Up to 15 contacts can be added to each watch. If attempted to call the watch from a phonenumber outside of the contact list, the phonecall will automatically be blocked.

FAQ:

The app displays inaccurate location:

Note: The watch needs to be outside and see transmitters to give the most accurate location. If the watch sees no or few transmitters, for example, the watch is placed in the middle of a house, then the location may be incorrect.

The app displays „Device offline“ or keeps transmitting wrong GPS location:

SMS code: pw,PASSWORD,ip,52.28.132.157,8001# requests updated location information from the watch.

I lost the ID number (The QR code):

ID can be displayed in the „App“ tab on the watch itself or using SMS code: pw,PASSWORD,ts#

I don't want the watch to connect with other Wonlex smartwatches (Friend's watches):

Turn off the feature: pw, PASSWORD,makefriend,0# ---- Turn on the feature: pw, PASSWORD,makefriend,1#

I don't want the watch to interrupt during school hours:

You can set the watch to „Do Not Disturb“ mode using the app, blocking all functionality apart from displaying the current time. You set the period for which the setting is active. Note that the period has to be set within a 24 hour limit (00:01-23:59). For example a 20:00-08:00 bedtime has to be set by creating 2 different periods, 20:00 23:59 and 00:01-08:00.

What kind of subscription do I need for the watch?:

The watch uses a NANO SIM card containing minimum amount of data(1GB pr. Month suffies) for location transmitting and common usage. The watch also needs credit for phonecalls if the subscription charges specifically for phonecalls and texting (SMS).

Further information and service is provided by Tölvutek ehf.

